

4th Edition

ELISA Kits

Focusing on Emerging Research Fields:

Metabolic Syndrome Biomarkers

Obesity/Type 2 Diabetes Markers
Insulin Resistance Markers
Cardiovascular Markers

Inflammatory Diseases Biomarkers

Rheumatoid Arthritis
Neuroinflammation Markers

Cancer & Autoimmune Diseases Biomarkers

SARS-CoV-2/COVID-19 Research Assays



Biomarkers

ACE2	2
ACBP	2
Adiponectin	2
ANGPTL3 / ANGPTL6	2
APRIL / BAFF	3
Asprosin	4
B7-H3 [CD276]	4
Caspase-1	4
CD40L	4
DLK1	4
Erythroferrone [ERFE]	5
FGL1	5
Gasdermin D	5
Gasdermin E	5
GPX1 / GPX3	5/6
ICOSL	6
IL-1 α / IL-1 β	6
IL-36 α / IL-36 β / IL-36 γ	6/7
IL-36Ra	7
IL-37	7
IL-38	7
Irisin	7
Nampt/Visfatin	8
PD-1 / PD-L1	8
Periostin	8
Progranulin	9
RBP4	9
RELM- β	9
Resistin	9
Sirtuin 1	9
SARS-CoV-2/COVID-19	10/11
Vaspin	11
Zinc- α -2-glycoprotein	11
Oxidative Stress Marker	12
Trace Elements	12

ACE2 *see also on Page 10*

Hypertension, CVD, CKD, Atherosclerosis, COVID-19, Airway Inflammation

NEW ACE2 (human) ELISA Kit

AG-45B-0023

Available Size: 96 wells

Species reactivity: Human
Sensitivity: 40 pg/ml

Range: 0.0625 to 4 ng/ml
Sample type: Serum, Plasma, Urine, Cell Culture Supernatant

Acyl-CoA-binding Protein [ACBP]

Metabolic Syndrome, Obesity, CVD, Myocardial Infarction/Ischemia, Cancer (NSCLC)

NEW Acyl-CoA-binding Protein (human) ELISA Kit

AG-45B-0019

Available Size: 96 wells

Species reactivity: Human
Sensitivity: 30 pg/ml

Range: 0.03125 to 2 ng/ml
Sample type: Serum, Plasma, Cell Culture Supernatant

LIT: Acyl-CoA-binding protein (ACBP): the elusive 'hunger factor' linking autophagy to food intake: J.M. Bravo-San Pedro, et al.; Cell Stress 3, 312 (2019)

Adiponectin

Metabolic Syndrome, Obesity, Insulin Resistance, Type 2 Diabetes (T2D), CVD, NAFLD, Obesity-related Inflammation, Various Cancers

Adiponectin (human) ELISA Kit **THE STANDARD**

AG-45A-0001Y

Available Sizes: 96 wells / Twin Plex

Species reactivity: Human
Sensitivity: 100 pg/ml

Range: 0.5 to 32 ng/ml
Sample type: Serum, Plasma, Urine, Cell Culture Supernatant

Adiponectin (mouse) ELISA Kit

AG-45A-0004Y

Available Sizes: 96 wells / Twin Plex

Species reactivity: Mouse
Sensitivity: 50 pg/ml

Range: 0.125 to 8 ng/ml
Sample type: Serum, Plasma, Cell Culture Supernatant

» Coming Soon: Adiponectin (rat) ELISA Kit

ANGPTL3

Metabolic Syndrome, CVD, NAFLD, Insulin Resistance, Rheumatoid Arthritis, Atherosclerosis

ANGPTL3 (human) ELISA Kit

AG-45A-0014Y

Available Sizes: 96 wells / Twin Plex

Species reactivity: Human
Sensitivity: 75 pg/ml

Range: 0.156 to 10 ng/ml
Sample type: Serum, Plasma, Cell Culture Supernatant

ANGPTL3 (mouse/rat) Dual ELISA Kit

AG-45A-0015Y

Available Sizes: 96 wells / Twin Plex

Species reactivity: Mouse / Rat
Sensitivity: 15 pg/ml

Range: 0.016 to 1 ng/ml
Sample type: Serum, Plasma, Cell Culture Supernatant

ANGPTL6

Metabolic Syndrome, Type 2 Diabetes (T2D), Obesity, Insulin Resistance, Preeclampsia

ANGPTL6 (human) ELISA Kit

AG-45A-0016Y

Available Sizes: 96 wells / Twin Plex

Species reactivity: Human
Sensitivity: 1.2 ng/ml

Range: 1.56 to 100 ng/ml
Sample type: Serum, Plasma, Cell Culture Supernatant

APRIL

Autoimmune Diseases (Sjögren's Syndrome, SLE, IgA Nephropathy (IgAN), Rheumatoid Arthritis, Lymphoma (CNSL), Atherosclerosis

NEW APRIL (human) ELISA Kit

AG-45B-0012

Available Size: 96 wells

Species reactivity: Human
Sensitivity: 7 pg/ml

Range: 7.8 to 500 pg/ml
Sample type: Serum, Plasma, Cell Culture Supernatant

BAFF

Autoimmune Diseases (Sjögren's Syndrome, SLE, Pancreatitis & Hepatitis), Lymphomas, Inflammatory Diseases (Polymyositis, RA, Sarcoidosis)

BAFF, Soluble (human) ELISA Kit (hypersensitive)

AG-45B-0001

Available Size: 96 wells

Species reactivity: Human
Sensitivity: 8 pg/ml

Range: 15.6 to 500 pg/ml
Sample type: Serum, Plasma, Cell Culture Supernatant

BAFF, Soluble (human) *Matched Pair Detection Set*

AG-46B-0001

Reagents to perform 5 x 96 wells

Species reactivity: Human
Sensitivity: 16 pg/ml

Range: 16 to 1000 pg/ml
Sample type: Serum, Plasma, Cell Culture Supernatant

Best-in-Class APRIL & BAFF ELISA Kits

AdipoGen[®]
LIFE SCIENCES

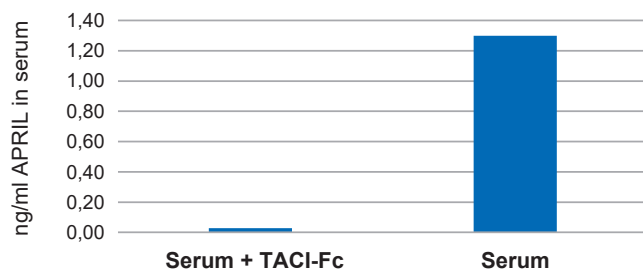
NEW APRIL (human) ELISA Kit

AG-45B-0012

96 wells

Sensitivity: 1 pg/ml
Range: 3.9 to 250 pg/ml
Sample: Cell Culture Supernatant, Plasma, Serum

Specificity: Serum from a healthy patient is treated with TACI (human):Fc (human) (Prod. No. AG-40B-0079) coupled to NHS-Sepharose (or EDAR-Fc beads as control). APRIL levels are measured using the APRIL (human) ELISA Kit (Prod. No. AG-45B-0012).



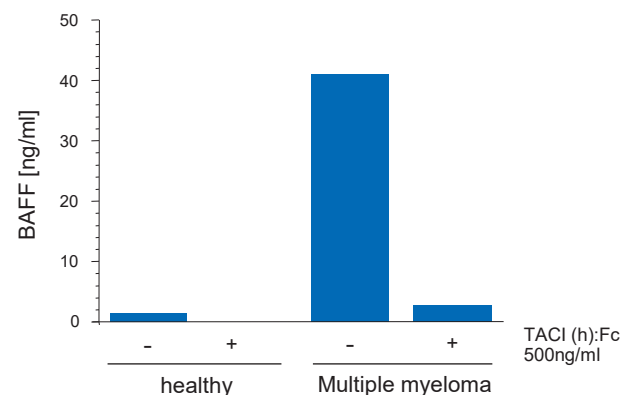
BAFF, Soluble (human) ELISA Kit (hypersensitive)

AG-45B-0001

96 wells

Sensitivity: 8 pg/ml
Range: 15.6 to 500 pg/ml
Sample: Cell Culture Supernatant, Plasma, Serum

Specificity: Serum from a healthy patient or patient with multiple sclerosis is left untreated or treated with 0.5 µg/ml of a BAFF receptor, TACI (human):Fc (human) (AG-40B-0079). BAFF levels are measured using the BAFF, Soluble (human) ELISA Kit (hypersensitive) (Prod. No. AG-45B-0001).



Asprosin

Metabolic Syndrome, Obesity, Type 2 Diabetes (T2D), CVD, PCOS

NEW Asprosin (human) ELISA Kit

AG-45B-0010

Available Size: 96 wells

Species reactivity: Human
Sensitivity: 230 pg/ml

Range: 0.3125 to 20 ng/ml
Sample type: Serum, Plasma, Cell Culture Supernatant

Asprosin (human) *Matched Pair Detection Set*

AG-46B-0011

Reagents to perform 5 x 96 wells

Species reactivity: Human
Sensitivity: 150 pg/ml

Range: 0.156 to 10 ng/ml
Sample type: Cell Culture Supernatant

B7-H3 [CD276]

Various Cancers (NSCLC, Prostate, Ovarian), Autoimmune Inflammatory Diseases (RA, Type 1 Diabetes, Asthma), CVD, Bacterial Infections (Meningitis, MPP)

NEW B7-H3 [CD276] (human) ELISA Kit

AG-45B-0025

Available Size: 96 wells

Species reactivity: Human
Sensitivity: 0.3 ng/ml

Range: 0.3125 to 20 ng/ml
Sample type: Serum, Plasma, Cell Culture Supernatant

Caspase-1

Assay for measuring Inflammasome Activation

Caspase-1 (mouse) ELISA Kit

AG-45B-0002

Available Size: 96 wells

Species reactivity: Mouse
Sensitivity: 33 pg/ml

Range: 0.15 to 10 ng/ml
Sample type: Serum, Plasma, Cell Culture Supernatant

Caspase-1 (mouse) *Matched Pair Detection Set*

AG-46B-0003

Reagents to perform 5 x 96 wells

Species reactivity: Mouse
Sensitivity: 50 pg/ml

Range: 0.15 to 10 ng/ml
Sample type: Cell Culture Supernatant

CD40L

Autoimmune Diseases (SLE), Chronic Lymphocytic Leukemia (CLL), Unstable Angina

NEW CD40L (human) ELISA Kit

AG-45B-0018

Available Size: 96 wells

Species reactivity: Human
Sensitivity: 20 pg/ml

Range: 0.03125 to 2 ng/ml
Sample type: Serum, Plasma, Cell Culture Supernatant

DLK1

Metabolic Syndrome, Various Cancers, Preeclampsia, Steatosis

DLK1, Soluble (human) ELISA Kit

AG-45A-0032Y

Available Size: 96 wells

Species reactivity: Human
Sensitivity: 336 pg/ml

Range: 0.47 to 30 ng/ml
Sample type: Serum, Cell Culture Supernatant

Erythroferrone [ERFE; Myonectin; CTRP15]

Anemia, Iron Metabolism, CVD, Metabolic Diseases, Doping Analysis

NEW Erythroferrone (human) ELISA Kit	AG-45B-0014	Available Size: 96 wells
Species reactivity: Human Sensitivity: 270 pg/ml	Range: 0.3125 to 20 ng/ml Sample type: Serum, Plasma, Cell Culture Supernatant	
Erythroferrone (human) Matched Pair Detection Set	AG-46B-0012	Reagents to perform 5 x 96 wells
Species reactivity: Human Sensitivity: 78 pg/ml	Range: 0.078 to 5 ng/ml Sample type: Serum, Plasma, Cell Culture Supernatant	

Fibrinogen-like Protein 1 [FGL1]

Various Cancers, Immunooncology, Rheumatoid Arthritis, Gestational Diabetes Mellitus (GDM)

NEW FGL1 (human) ELISA Kit	AG-45B-0022	Available Size: 96 wells
Species reactivity: Human Sensitivity: 1.8 pg/ml	Range: 7.8 to 500 pg/ml Sample type: Serum, Plasma, Cell Culture Supernatant	
NEW FGL1 (human) Matched Pair Detection Set (mAb-based)	AG-46B-0014	Reagents to perform 5 x 96 wells
Species reactivity: Human Sensitivity: <5 pg/ml	Range: 7.8 pg/ml to 500 pg/ml Sample type: Serum, Plasma, Cell Culture Supernatant	

Gasdermin D

Pyroptosis, Sepsis

NEW Gasdermin D (mouse) ELISA Kit	AG-45B-0011	Available Size: 96 wells
Species reactivity: Mouse Sensitivity: 14 pg/ml	Range: 15.6 to 1000 pg/ml Sample type: Cell Culture Supernatant, Cell Lysate	

Gasdermin E

Pyroptosis, Sepsis

NEW Gasdermin E (human) ELISA Kit	AG-45B-0024	Available Size: 96 wells
Species reactivity: Human Sensitivity: 50 pg/ml	Range: 0.0625 to 4ng/ml Sample type: Serum, Plasma, Cell Culture Supernatant	

GPX1 [Glutathione Peroxidase 1]

Various Cancers, Insulin Resistance, Obesity, Type 2 Diabetes (T2D)

GPX1 (human) ELISA Kit	AG-45A-0037Y	Available Sizes: 96 wells / Twin Plex
Species reactivity: Human Sensitivity: 45 pg/ml	Range: 0.0625 to 4 ng/ml Sample type: Plasma	

GPX3 [Glutathione Peroxidase 3]

Hypertension, Type 2 Diabetes (T2D), CVD, Atherosclerosis, Amyotrophic Lateral Sclerosis (ALS)

GPX3 (human) ELISA Kit

AG-45A-0020Y

Available Sizes: 96 wells / Twin Plex

Species reactivity: Human
Sensitivity: 100 pg/ml

Range: 0.5 to 32 ng/ml
Sample type: Serum, Plasma, Cell Culture Supernatant

ICOSL [B7-H2; CD275]

Autoimmune Diseases (GVHD), Various Cancers, Asthma

NEW ICOSL (B7-H2/CD275) (human) ELISA Kit

AG-45B-0017

Available Size: 96 wells

Species reactivity: Human
Sensitivity: 55 pg/ml

Range: 0.0625 to 4 ng/ml
Sample type: Serum, Plasma, Cell Culture Supernatant

IL-1 α

Assay for measuring Inflammasome Activation and corresponding Inflammatory Diseases

IL-1 α (mouse) *Matched Pair Detection Set*

AG-46B-0004

Reagents to perform 5 x 96 wells

Species reactivity: Mouse
Sensitivity: 10 pg/ml

Range: 15.6 to 2000 pg/ml
Sample type: Cell Culture Supernatant

IL-1 β

Inflammasome-dependent Diseases, Familial Mediterranean Fever, Infections, Systemic Inflammatory Diseases, Selected Autoimmune Diseases, Various Cancers, Endometriosis, Allergic Rhinitis, Ventilator-associated Pneumonia, Neonatal Sepsis

NEW IL-1 β (human) ELISA Kit

AG-45B-0021

Available Size: 96 wells

Species reactivity: Human
Sensitivity: 1 pg/ml

Range: 1.5625 to 100 pg/ml
Sample type: Serum, Plasma, Cell Culture Supernatant

IL-36 α

Skin Inflammation, Psoriasis, IBD, Ulcerative Colitis, Crohn's Disease, Sjögren's Syndrome

NEW IL-36 α (human) ELISA Kit

AG-45B-0013

Available Size: 96 wells

Species reactivity: Human
Sensitivity: 4 pg/ml

Range: 7.8 to 500 pg/ml
Sample type: Cell Culture Supernatant, Cell Lysate

IL-36 β

Skin Inflammation, Psoriasis

IL-36 β (human) *Matched Pair Detection Set*

AG-46B-0009

Reagents to perform 5 x 96 wells

Species reactivity: Human
Sensitivity: 10 pg/ml

Range: 15.6 to 1000 pg/ml
Sample type: Cell Culture Supernatant

IL-36 γ

Skin Inflammation, Psoriasis, Lung & Bowel Inflammation

IL-36 γ (human) ELISA Kit

AG-45B-0008

Available Size: 96 wells

Species reactivity: Human
Sensitivity: 3 pg/ml

Range: 3.9 to 250 pg/ml
Sample type: Serum, Cell Culture Supernatant

IL-36 γ (human) Matched Pair Detection Set

AG-46B-0010

Reagents to perform 5 x 96 wells

Species reactivity: Human
Sensitivity: 1 pg/ml

Range: 3.9 to 250 pg/ml
Sample type: Cell Culture Supernatant

IL-36Ra

Skin Inflammation

IL-36Ra (human) Matched Pair Detection Set

AG-46B-0006

Reagents to perform 5 x 96 wells

Species reactivity: Human
Sensitivity: 0.5 ng/ml

Range: 0.78 to 50 ng/ml
Sample type: Cell Culture Supernatant

IL-37

Inflammatory Diseases, Autoimmune Diseases (SLE), Various Cancers, Asthma, Atherosclerosis

IL-37 (human) ELISA Kit

AG-45A-0041Y

Available Sizes: 96 wells / Twin Plex

Species reactivity: Human
Sensitivity: 10 pg/ml

Range: 0.016 to 1 ng/ml
Sample type: Serum, Plasma

IL-38

Allergic Inflammation, Asthma, Autoimmune Diseases (SLE)

IL-38 (human) Matched Pair Detection Set

AG-46B-0007

Reagents to perform 5 x 96 wells

Species reactivity: Human
Sensitivity: 20 pg/ml

Range: 0.031 to 2 ng/ml
Sample type: Serum, Cell Culture Supernatant

Irisin

Energy Metabolism, Obesity, Type 2 Diabetes (T2D), Insulin Resistance, COPD

Irisin Competitive ELISA Kit

AG-45A-0046Y

Available Sizes: 96 wells / Twin Plex

Species reactivity: Human / Monkey / Mouse / Rat
Sensitivity: 1 ng/ml

Range: 0.001 to 5 μ g/ml
Sample type: Serum, Plasma, Cell Culture Supernatant

LIT: High irisin levels are associated with better glycemic control and bone health in children with Type 1 diabetes: M.F. Faienza, et al.; *Diab. Res. Clin. Pract.* **141**, 10 (2018) • Grape pomace extract supplementation activates FNDC5/irisin in muscle and promotes white adipose browning in rats fed a high-fat diet: C. Rodriguez Lanzi, et al.; *Food Funct.* **11**, 1537 (2020)

Myonectin see Erythroferrone on Page 5

Nampt / Visfatin

Diabetes, Obesity, Sepsis, IBD, Crohn's Disease, Rheumatoid Arthritis, Preeclampsia, Various Cancers

Nampt [Visfatin/PBEF] (human) ELISA Kit THE STANDARD	AG-45A-0006Y	Available Sizes: 96 wells / Twin Plex
Species reactivity: Human	Range: 0.125 to 8 ng/ml	
Sensitivity: 30 pg/ml	Sample type: Serum	
Nampt [Visfatin/PBEF] (human) (IntraCellular) ELISA Kit	AG-45A-0008Y	Available Sizes: 96 wells / Twin Plex
Species reactivity: Human	Range: 0.25 to 16 ng/ml	
Sensitivity: 30 pg/ml	Sample type: Cell Lysate	
Nampt [Visfatin/PBEF] (mouse/rat) Dual ELISA Kit	AG-45A-0007Y	Available Sizes: 96 wells / Twin Plex
Species reactivity: Mouse / Rat	Range: 0.5 to 32 ng/ml	
Sensitivity: 50 pg/ml	Sample type: Serum	

PD-1 [Programmed Cell Death Protein 1; CD279]

Various Cancers, PD-1/PD-L1 Immunotherapy

PD-1 (human) ELISA Kit	AG-45B-0015	Available Size: 96 wells
Species reactivity: Human	Range: 3.125 to 200 pg/ml	
Sensitivity: 1.6 pg/ml	Sample type: Serum, Plasma, Cell Culture Supernatant	

PD-L1 [Programmed Cell Death 1 Ligand Protein 1; CD274]

Various Cancers, PD-1/PD-L1 Immunotherapy

PD-L1 (human) ELISA Kit	AG-45B-0016	Available Size: 96 wells
Species reactivity: Human	Range: 2.34 to 150 pg/ml	
Sensitivity: 0.8 pg/ml	Sample type: Serum, Plasma, Cell Culture Supernatant	

Periostin

Asthma, Allergic Inflammation, Various Cancers, Metastasis in Epithelial Tumors, Renal Injury, Osteoarthritis

Periostin (human) ELISA Kit	AG-45B-0004	Available Size: 96 wells
Species reactivity: Human	Range: 78 to 5000 pg/ml	
Sensitivity: 15 pg/ml	Sample type: Serum, Plasma, Cell Culture Supernatant	
Periostin (mouse) ELISA Kit	AG-45B-0005	Available Size: 96 wells
Species reactivity: Mouse	Range: 31 to 2000 pg/ml	
Sensitivity: 10pg/ml	Sample type: Serum, Plasma, Cell Culture Supernatant	
Periostin (human) Matched Pair Detection Set	AG-46B-0005	Reagents to perform 5 x 96 wells
Species reactivity: Human	Range: 80 to 5000 pg/ml	
Sensitivity: 30 pg/ml	Sample type: Serum, Plasma, Cell Culture Supernatant	
Periostin (mouse) Matched Pair Detection Set	AG-46B-0002	Reagents to perform 5 x 96 wells
Species reactivity: Mouse	Range: 31 to 2000 pg/ml	
Sensitivity: 20 pg/ml	Sample type: Serum, Cell Culture Supernatant	

GLOSSARY: CVD: Cardiovascular Disease; NAFLD: Non-Alcoholic Fatty Liver Disease; SLE: Systemic Lupus Erythematosus; RA: Rheumatoid Arthritis

Progranulin

• **Trusted Reproducible Results!** • **Used to Determine Cut-Off values for FTLD!**

FTLD, Rheumatoid Arthritis, Various Cancers, Type 2 Diabetes (T2D), Bipolar Disorder

Progranulin (human) ELISA Kit THE STANDARD	AG-45A-0018Y	Available Sizes: 96 wells / Twin Plex
Species reactivity: Human	Range: 0.063 to 4 ng/ml	
Sensitivity: 32 pg/ml	Sample type: Serum, Plasma, Urine, Cell Culture Supernatant, CSF	
Progranulin (mouse) ELISA Kit THE STANDARD	AG-45A-0019Y	Available Sizes: 96 wells / Twin Plex
Species reactivity: Mouse	Range: 0.125 to 8 ng/ml	
Sensitivity: 60 pg/ml	Sample type: Serum, Cell Culture Supernatant	
Progranulin (rat) ELISA Kit THE STANDARD	AG-45A-0043Y	Available Sizes: 96 wells / Twin Plex
Species reactivity: Rat	Range: 0.063 to 4 ng/ml	
Sensitivity: 40 pg/ml	Sample type: Serum, Cell Culture Supernatant	

RBP4

Insulin Resistance, Microalbuminuria, Type 2 Diabetes (T2D), CVD, Obesity, NAFLD, PCOS, Ovarian Cancer

RBP4 (human) ELISA Kit (Quantitative) THE STANDARD	AG-45A-0035Y	Available Sizes: 96 wells / Twin Plex
Species reactivity: Human	Range: 0.39 to 25 ng/ml	
Sensitivity: 380 pg/ml	Sample type: Serum, Plasma, Urine, Cell Culture Supernatant	
RBP4 (human) Competitive ELISA Kit	AG-45A-0010Y	Available Sizes: 96 wells / Twin Plex
Species reactivity: Human	Range: 0.001 to 5 µg/ml	
Sensitivity: 1 ng/ml	Sample type: Serum, Plasma, Urine, Cell Culture Supernatant	
RBP4 (mouse/rat) Dual ELISA Kit	AG-45A-0012Y	Available Sizes: 96 wells / Twin Plex
Species reactivity: Mouse / Rat	Range: 0.188 to 12 ng/ml	
Sensitivity: 60 pg/ml	Sample type: Serum, Urine, Cell Culture Supernatant	

RELM-β

Potential Gut-Inflammation, Inflammatory Bowel Disease, Crohn's Disease, Ulcerative Colitis

RELM-β (human) Matched Pair Detection Set	AG-46A-0001	Reagents to perform 5 x 96 wells
Species reactivity: Human	Range: 0.016 to 1 ng/ml	
Sensitivity: 10 pg/ml	Sample type: Human Feces	

Resistin

Insulin Resistance, Type 2 Diabetes (T2D), Obesity, NAFLD, Various Inflammatory Diseases

Resistin (human) ELISA Kit	AG-45A-0023Y	Available Sizes: 96 wells / Twin Plex
Species reactivity: Human	Range: 0.125 to 8 ng/ml	
Sensitivity: 100 pg/ml	Sample type: Serum, Plasma, Cell Culture Supernatant	

Sirtuin 1

Inquire – Bulk Orders only

Metabolic Syndrome, Type 2 Diabetes, Alzheimer's Disease, Various Cancers, Inflammatory Diseases

Sirtuin 1 (human) (IntraCellular) ELISA Kit	AG-45A-0029Y	
Species reactivity: Human	Range: 0.032 to 2 ng/ml	
Sensitivity: 30 pg/ml	Sample type: Cell Lysate	

NEW

Validated SARS-CoV-2 Research Assays

 MANUFACTURED IN SWITZERLAND

QUALITATIVE IgG DETECTION

SARS-CoV-2 (Spike RBD) IgG Serological ELISA Kit

AG-45B-0020

This is a sensitive and specific ELISA Kit that can be used for the qualitative measurement of human Immunoglobulin G (IgG) against SARS-CoV-2 Spike (Receptor Binding Domain) protein in serum and plasma samples.

False Positive Control Plate:

Included in this assay kit and unique to the market for SARS-CoV-2 IgG assays, is a second plate (antigen non-coated Background Plate or False Positive Control Plate) to determine the sample specific background and to measure the amount of IgG antibodies non-specifically bound to the well. To measure presence of anti-SARS-CoV-2 human IgG antibodies in serum or plasma, net sample optical densities (Net ODs) are calculated by subtracting each sample Background Plate OD from the Spike (SARS-CoV-2) Antigen Plate (Spike Plate) OD.

Dry Blood Samples:

The Assay Kit can also be used with Dry Blood Samples, which is an inexpensive and easy alternative collecting blood!

VALIDATE SARS-CoV-2 IMMUNE RESPONSE

SARS-CoV-2 Neutralizing Antibodies Detection Kit

AG-48B-0002

This Assay Kit that can be used to detect the presence of neutralizing antibodies against SARS-CoV-2 in serum/plasma in about 2 hours independently of species and isotypes! It is an easy, safe, fast and scalable alternative to the classical neutralization assays using Vero E6 cells, such as virus neutralization test (VNT) and pseudo-virus neutralization test (pVNT) and does **not** need to follow biosafety requirements.

Useful Tool for SARS-CoV-2 Vaccine and Therapeutic Development:

The kit is useful in current COVID-19 investigations of seroprevalence, assessment of immune response, herd immunity, longevity of protective immunity, efficacy of different vaccine candidates as well as tracking infections in animals.

To Confirm & Characterize further SARS-CoV-2 Serological Assay Results:

This Neutralizing Antibody Detection Kit is ideal to further characterize the positive anti-SARS-CoV-2 IgG antibodies, detected with the SARS-CoV-2 IgG (Spike RBD) Serological ELISA Kit (Prod. No. AG-45B-0020).

DISCOVERY OF INHIBITORS

SARS-CoV-2 Inhibitor Screening Kit

AG-48B-0001

This is a High Throughput Screening (HTS) detection assay for the determination of SARS-CoV-2 blocking compounds.

The SARS-CoV-2 Inhibitor Screening Kit contains key reagents required to facilitate identification of SARS-CoV-2 biological or chemical inhibitors. This inhibitor screen is based on a colorimetric ELISA kit, which measures the binding of the RBD of the Spike S protein from SARS-CoV-2 to its human receptor ACE2.

QUANTITATIVE SOLUBLE ACE2 DETECTION

ACE2 (human) ELISA Kit

AG-45B-0023

This is a sensitive and specific colorimetric sandwich ELISA Kit that can be used for the *in vitro* quantitative determination of soluble human ACE2 in cell culture supernatants, serum, plasma and urine. Strong binding of the Spike protein of SARS-CoV-2 to ACE2, along with proteolytic cleavage of ACE2 by transmembrane serine protease 2 (TMPRSS2), facilitates entry of the virus into cells, viral replication and cell-to-cell transmission. Soluble ACE2 may act as a competitive interceptor of SARS-CoV-2 and other coronaviruses by preventing binding of the viral particle to the surface-bound, full-length ACE2.

SARS-CoV-2 Variants Neutralizing Antibodies Detection Kits

PRODUCT NAME	PID	APPLICATION
THE STANDARD for Initial SARS-CoV-2 Strain SARS-CoV-2 Neutralizing Antibodies Detection Kit	AG-48B-0002	To measure the presence of neutralizing/blocking antibodies in human serum/plasma that inhibit the binding of the SARS-CoV-2 Spike (RBD) (initial strain) protein to its human receptor ACE2.
SARS-CoV-2 Neutralizing Antibodies Detection Kit (B.1.1.7 Variant, Alpha)	AG-48B-0003	To measure the presence of neutralizing/blocking antibodies in human serum/plasma that inhibit the binding of the SARS-CoV-2 Spike (RBD) (B.1.1.7 Variant, Alpha) protein to its human receptor ACE2.
SARS-CoV-2 Neutralizing Antibodies Detection Kit (P.1 Variant, Gamma)	AG-48B-0004	To measure the presence of neutralizing/blocking antibodies in human serum/plasma that inhibit the binding of the SARS-CoV-2 Spike (RBD) (P.1 Variant, Gamma) protein to its human receptor ACE2.
SARS-CoV-2 Neutralizing Antibodies Detection Kit (B.1.351 Variant, Beta)	AG-48B-0005	To measure the presence of neutralizing/blocking antibodies in human serum/plasma that inhibit the binding of the SARS-CoV-2 Spike (RBD) (B.1.351 Variant, Beta) protein to its human receptor ACE2.
SARS-CoV-2 Neutralizing Antibodies Detection Kit (B.1.617.1 Variant, Kappa)	AG-48B-0006	To measure the presence of neutralizing/blocking antibodies in human serum/plasma that inhibit the binding of the SARS-CoV-2 Spike (RBD) (B.1.617.1 Variant, Kappa) protein to its human receptor ACE2.
SARS-CoV-2 Neutralizing Antibodies Detection Kit (B.1.617.2 Variant, Delta)	AG-48B-0007	To measure the presence of neutralizing/blocking antibodies in human serum/plasma that inhibit the binding of the SARS-CoV-2 Spike (RBD) (B.1.617.2 Variant, Delta) protein to its human receptor ACE2.

Vaspin

Type 2 Diabetes (T2D), Obesity, Insulin Resistance, CVD, NAFLD, Inflammatory Diseases

Vaspin (human) ELISA Kit <small>THE STANDARD</small>	AG-45A-0017Y	<i>Available Sizes: 96 wells / Twin Plex</i>
Species reactivity: Human	Range: 0.016 to 1 ng/ml	
Sensitivity: 12 pg/ml	Sample type: Serum, Plasma, Cell Culture Supernatant	

Visfatin *see Nampt on Page 8*

Zinc- α -2-glycoprotein (ZAG)

Obesity, Various Cancers, Diabetic Nephropathy, Preeclampsia

ZAG (human) TurboELISA Kit	AG-48B-1000	<i>Available Size: 96 wells</i>
Species reactivity: Human	Range: 0.9375 to 60 ng/ml	
Sensitivity: 0.23 ng/ml	Sample type: Serum, Plasma, Cell Culture Supernatant	
ZAG (human) Matched Pair Detection Set	AG-46B-0008	<i>Reagents to perform 5 x 96 wells</i>
Species reactivity: Human	Range: 0.0156 to 1 ng/ml	
Sensitivity: 100 pg/ml	Sample type: Serum, Plasma, Cell Culture Supernatant	

GLOSSARY: CVD: Cardiovascular Disease; NAFLD: Non-Alcoholic Fatty Liver Disease; SLE: Systemic Lupus Erythematosus; RA: Rheumatoid Arthritis



JaICA

Unique High Quality ImmunoAssays

Oxidative Stress Marker Assays

PRODUCT NAME	PID	DETECTION RANGE	SAMPLES TYPES	SIZE
Dityrosine [DT] ELISA Kit	JAI-KDT-010E	0.05 – 12 µmol/L	UR	1x 96 wells
8-OHdG Check ELISA Kit	JAI-KOG-200SE	0.5 – 200 ng/mL	UR	1x 96 wells
8-OHdG Check ELISA Kit (High Sensitivity)	JAI-KOG-HS10E	0.125 – 10 ng/mL	PL, SE, UR	1x 96 wells
Hexanoyl-Lys [HEL] ELISA Kit	JAI-KHL-700E	2 – 700 nmol/L	SE, UR	1x 96 wells
Total Antioxidant Capacity (PAO) Test Kit	JAI-KPA-050	21.9 – 4378 µmol/L (cupric ion reducing power)	PL, SE	1x 96 wells

Trace Element Colorimetric Assays

PRODUCT NAME	PID	DETECTION RANGE	SAMPLES TYPES	SIZE
Iron Assay Kit (Ferrozine Method)	JAI-CFE-005	5 – 1000 µg/dL	CL, PL, SA, SE, TS, UR	100 tests
Iron Assay Kit (Nitroso-PSAP Method)	JAI-CFE-010	10 – 1000 µg/dL	CL, PL, SA, SE, TS, UR	100 tests
UIBC Assay Kit (Bathophenanthroline Method)	JAI-CBC-800	10 – 800 µg/dL	PL, SE	100 tests
Copper Assay Kit (3,5-DiBr-PAESA Method)	JAI-CCU-400	3 – 400 µg/dL	CL, PL, SA, SE, TS, UR	100 tests
Zinc Assay Kit (5-Br-PAPS Method)	JAI-CZN-001	4 – 1000 µg/dL	CL, PL, SA, SE, TS, UR	100 tests
Calcium Assay Kit (Chlorophosphonazo-III Method)	JAI-CCA-020	0.2 – 20 mg/dL	CL, PL, SA, SE, TS, UR	200 tests
Calcium Assay Kit (O-Cresolphthalein Method)	JAI-CCA-030	0.2 – 30 mg/dL	CL, PL, SA, SE, TS, UR	200 tests
Magnesium Assay Kit (Xylidyl Blue-I Method)	JAI-CMG-035	0.2 – 3.5 mg/dL	CL, PL, SA, SE, TS, UR	100 tests

Sample Types: CL=Cell Lysate; PL=Plasma; SA=Saliva; SE=Serum; TS=Tissue Supernatant; UR=Urine

High Quality ELISA Kits

Developed & Manufactured by AdipoGen Life Sciences



- *Extensively validated*
- *High Specificity, Sensitivity & Accuracy*
- *Reproducible Results with low Inter- and Intra-Assay Variation*
- *Many Citations in Peer-reviewed Key Literature References*

AdipoGen[®]
LIFE SCIENCES



AdipoGen[®]
LIFE SCIENCES
www.adipogen.com

EUROPE/REST OF WORLD
AdipoGen Life Sciences
TEL +41-61-926-60-40
FAX +41-61-926-60-49
info@adipogen.com

NORTH & SOUTH AMERICA
Adipogen Corp.
TEL +1-858-457-8383
FAX +1-858-457-8484
info-us@adipogen.com

For local distributors please visit our website.