

Key Inflammasome Research Tools

KO-Validated Standard Antibodies

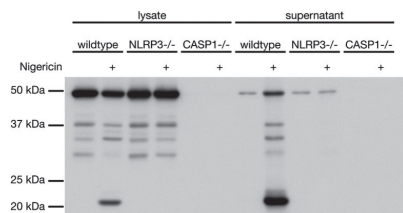
Detection of Activated p10 & p20 Caspase-1 by Western Blot (WB)

anti-Caspase-1 (p20) (mouse), mAb (Casper-1)

WB, IHC, IP

AG-20B-0042

FIGURE: Mouse caspase-1 (p20) is detected by immunoblotting using anti-Caspase-1 (p20) (mouse), mAb (Casper-1) (Prod. No. AG-20B-0042) in cell extracts and supernatants of differentiated bone marrow-derived dendritic cells (BMDCs) from wild-type, NLRP3^{-/-} and caspase-1^{-/-} mice.

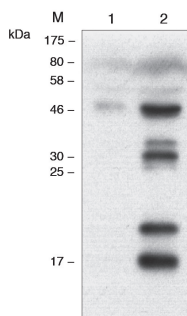


anti-Caspase-1 (p20) (human), mAb (Bally-1)

WB

AG-20B-0048

FIGURE: Human caspase-1 (p20) is detected by immunoblotting using anti-Caspase-1 (p20) (human), mAb (Bally-1) (Prod. No. AG-20B-0048) in supernatants of THP1 cells differentiated for 3 h with 0.5 μM PMA (Prod. No. AG-CN2-0010) and activated (lane 2) or not (lane 1) by 5 μM Nigericin for 1 h (Prod. No. AG-CN2-0020).

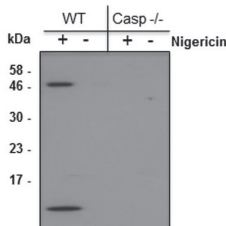


anti-Caspase-1 (p10) (mouse), mAb (Casper-2)

WB

AG-20B-0044

FIGURE: Mouse caspase-1 (p10) is detected by immunoblotting using anti-Caspase-1 (p10) (mouse), mAb (Casper-2) (Prod. No. AG-20B-0044) in supernatants of differentiated bone marrow-derived dendritic cells (BMDCs) from wild-type and caspase-1^{-/-} mice activated or not by 5 μM nigericin (Prod. No. AG-CN2-0020) for 30 min.



MOST TRUSTED NLRP3 Antibody

anti-NLRP3/NALP3, mAb (Cryo-2)

ICC, IHC, IP, WB

AG-20B-0014

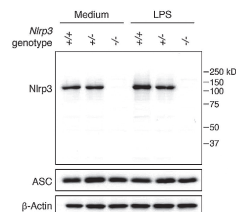


FIGURE: Mouse NLRP3 is detected in mouse macrophages (BMDMs) WT +/+ (lane 1), NLRP3^{+/-} (lane 2) or NLRP3^{-/-} (lane 3), with or without treatment with LPS (50 ng/ml) for 3 h, using the monoclonal antibody to NLRP3 (Cryo-2) (Prod. No. AG-20B-0014).

Over 1000 citations!

AL177 – Asc for the Best!

anti-Asc, pAb (AL177)

FACS, ICC, IHC, IP, WB, FUNC

AG-25B-0006

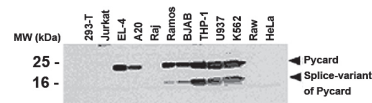


FIGURE: Western blot analysis of various human (293-T, Jurkat, Raj, Ramos, BJAB, THP-1, U937, K562, Raw, HeLa) and mouse (EL-4, A20) cell lines using anti-Asc, pAb (AL177) (Prod. No. AG-25B-0006).

The antibody AL177 can be used to measure inflammasome activation *in vivo*, detecting Asc speck formation by immunofluorescence and by Flow Cytometry.

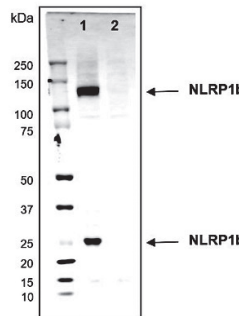
KO-Validated Standard Antibodies

NLRP1 – A New Inflammasome Player

anti-NLRP1b (mouse), mAb (2A12)

WB AG-20B-0084

FIGURE: Mouse NLRP1b (mouse) (full-length and UFA-CARD fragment) is detected in cell extracts (about 30 µg) from the mouse cells Raw264.7 (lane 1) or Raw264.7 NLRP1b KO (lane 2) using NLRP1b, mAb (2A12) (Prod. No. AG-20B-0084).



ZBP1 – Regulator of NLRP3 and Interferon

anti-ZBP1, mAb (Zippy-1)

ICC, IP, WB

AG-20B-0010

The dsRNA-binding protein ZBP1 is a key factor in interferon biology involved in viral infection and inflammation regulation. It activates the NLRP3 inflammasome, the IFN pathway and different programmed cell deaths regulated by the PANoptosome complexes. Recently, studies show that the RNA-editing enzyme ADAR1 prevents ZBP1 activation.

Other Standard Antibodies for Inflammasome and PANoptosis Research

anti-AIM2 (human), mAb (3B10)

ICC, WB

AG-20B-0040

anti-Caspase-4/11 (p20), mAb (Flamy-1)

IP, WB

AG-20B-0060

anti-Caspase-8 (human), mAb (C15)

ICC, IP, WB

AG-20B-0057

anti-Caspase-8 (mouse), mAb (1G12)

ELISA, FACS, ICC, WB

AG-20T-0137

anti-Caspase-8 (mouse), mAb (3B10)

ELISA, FACS, ICC, IHC, WB

AG-20T-0138

anti-IL-1 α (p18) (mouse), mAb (Teo-1)

ELISA, WB

AG-20B-0064

anti-RIG-I, mAb (Alme-1)

IHC, IP, WB

AG-20B-0009

NEW

NLRP3 Inflammasome Starter Sets *Key Antibodies for Western Blotting*

NLRP3 Inflammasome Human Antibodies Starter Set

AG-44B-0008

NLRP3 Inflammasome Mouse Antibodies Starter Set

AG-44B-0009

Small Molecule NLRP3 Inflammasome Activators & Inhibitors

Activators

Monosodium urate (Activity tested)

- Crystals AG-CR1-3950
- Ready-to-Use AG-CR1-3951

N-Acetyl-D-glucosamine AG-CN2-0489

Nigericin . Na AG-CN2-0020

Inhibitors

BAY 11-7082

AG-CR1-0013

Dapansutril

AG-CR1-3535

Glyburide (USP)

AG-CR1-3613

Isoliquiritigenin

AG-CN2-0459

K777

AG-CR1-0158

MCC950 . Na

AG-CR1-3615

Parthenolide

AG-CN2-0455

Prostaglandin E2

AG-CL1-0001